



It's only been a few sessions, and my child is already starting to recognize when their anxious thoughts might be 'false alarms.'

- Brightline parent



Get virtual behavioral health support for **your family**

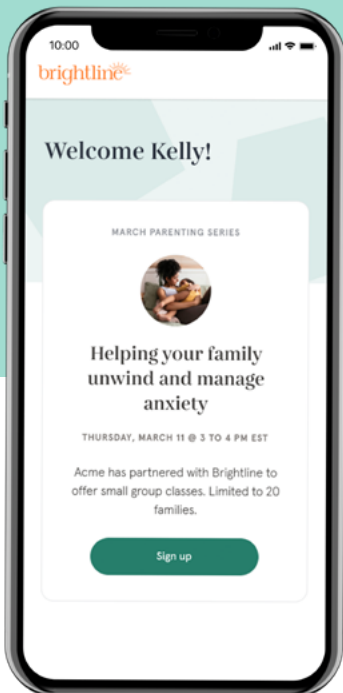
Aetna has expanded its network coverage to include Brightline. Here's what's covered:

START HERE

Connect+

On-the-go access to personalized content, group classes, interactive exercises, and chat with coaches for tips and guidance

Available nationwide

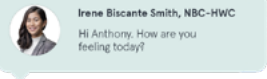


GET SUPPORT WHEN YOU NEED IT

Coaching

Programs to help tackle everyday common challenges with expert behavioral health coaches in as few as four sessions

Available nationwide



Care

Personalized behavior therapy, speech therapy, and medication evaluation & support from licensed Brightline clinicians

Available nationwide

Services are covered according to your Aetna medical plan. Standard OOP costs and deductibles apply.

GET STARTED AT

hellobrightline.com/aetna



Questions? Get in touch with Brightline Member Support
888-224-7332 care@hellobrightline.com

How to get started?

1 Easily and quickly sign up at hellobrightline.com/aetna

2 Create an account and access Brightline Connect+

3 Answer a few questions so we can get you the right care

4 Schedule your first appointment with no wait list

Why go with Brightline?

NO MORE QUESTION MARKS

We get you answers and support at every step, from check-ins with your child's therapist to regular progress updates.

THE RIGHT CARE AT THE RIGHT TIME

Our expert care teams work with you on personalized care plans that work for your child and for you.

VIRTUAL CARE FROM ANYWHERE

Access confidential video visits plus on-demand chats, tips & resources, and interactive exercises in Brightline Connect+.

GET STARTED AT
hellobrightline.com/aetna



brightline

Questions? Get in touch with Brightline Member Support
888-224-7332 care@hellobrightline.com

All clinical services are provided by licensed physicians and clinicians practicing within independently owned and operated professional practices. These are known as Brightline Medical Associates, PA, Brightline Medical Associates of California, Inc., Brightline Medical Associates of New Jersey, and Brightline Medical Associates of Kansas, Inc. Brightline, Inc. does not itself provide any physician, behavioral health professional, or other healthcare provider services.